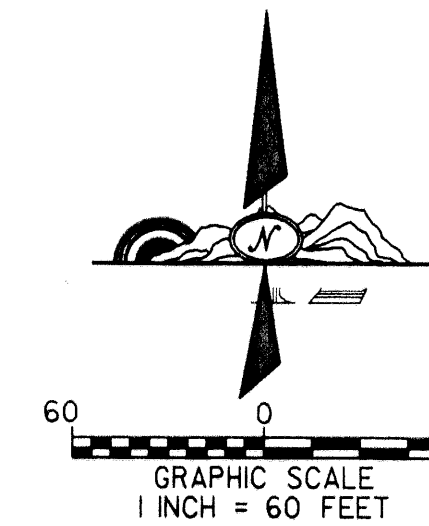


KENCO RANCH

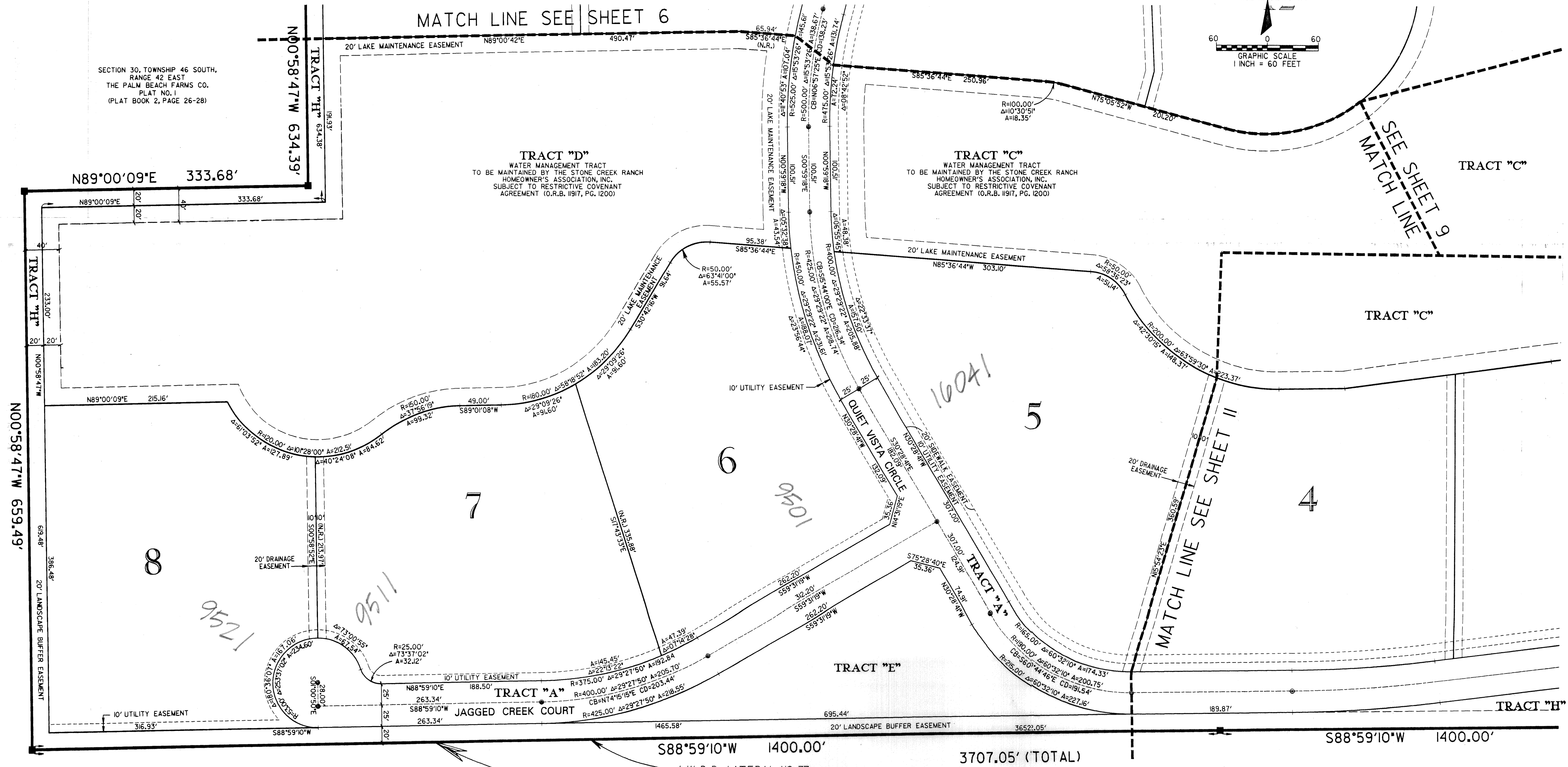
BEING A REPLAT OF A PART OF TRACTS 1, 2, 3, 4, 5, 6, 7, 8, 41, 42, AND ALL OF TRACTS 25, 26, 27, 28, 29, 30, 31, 32, 33, 34, 35, 36, 37, 38, 39, 40, 54, 55, 56, 57, 58, 59, 60, 61, 62, 63, AND 64, PALM BEACH FARMS CO. PLAT NO. 1, AS RECORDED IN PLAT BOOK 2, PAGES 26 THRU 28 OF THE PUBLIC RECORDS OF PALM BEACH COUNTY, FLORIDA, SITUATED IN SECTION 30, TOWNSHIP 46 SOUTH, RANGE 42 EAST, PALM BEACH COUNTY, FLORIDA
SHEET 7 OF 12
SEPTEMBER 2001

STATE OF FLORIDA } S.S.
COUNTY OF PALM BEACH }
THIS PLAT WAS FILED FOR
RECORD AT _____ DAY OF
THIS _____ MONTH, 2001 AND
DULY RECORDED IN PLAT BOOK
_____ ON PAGES _____ THRU

DOROTHY H. WILKEN, CLERK
CIRCUIT COURT
BY: _____ DC



SECTION 30, TOWNSHIP 46 SOUTH,
RANGE 42 EAST
THE PALM BEACH FARMS CO.
PLAT NO. 1
(PLAT BOOK 2, PAGE 26-28)



SUBDIVISION
BOOK 93
PAGE 199
Kenco Ranch #
FLOOR PLAN # 215A
ZONING A/R
SE 09-1214
TAZ 763
FUD NAME
33446
ZIP CODE

THIS INSTRUMENT WAS PREPARED BY DAVID P. LINDLEY IN THE OFFICES OF
CAULFIELD AND WHEELER, INC., 7301A PALMETTO PARK ROAD, SUITE 100A
BOCA RATON, FLORIDA 33433.

L.W.D.D. LATERAL NO. 37
SECTION 30, TOWNSHIP 46 SOUTH,
RANGE 42 EAST
THE PALM BEACH FARMS CO.
PLAT NO. 1
(PLAT BOOK 2, PAGE 26-28)



CAULFIELD & WHEELER, INC.
Consulting Engineers - Land Planners - Surveyors
7301A West Palmetto Park Road - Suite 100A
Boca Raton, Florida 33433 (561) - 392-1991